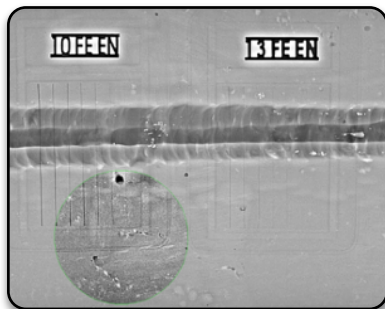


## Portable **constant potential** X-ray generators optimized for **Digital Radiography** with focal spot down to **200 $\mu\text{m}$** !



### APPLICATIONS

- ▶ Aeronautic
- ▶ Aerospace
- ▶ Piping (in power, petrochemical or pharmaceutical plants)
- ▶ Composite materials
- ▶ Windmills
- ▶ High voltage electric lines and pylons
- ▶ Historical assets
- ▶ Shipyards



### KEY FEATURES

#### Portability

Lightweight unit. With embedded batteries, X-ray anything, anywhere at any time ! Powered from the mains or from batteries

#### From 20 up to 200 kV

Large range of applications : X-ray anything from paper up to 1" (25.4 mm Fe) and higher according to your image quality expectation



#### kV and mA real time adjustment

Change kV and mA during X-ray shot for quick and easy image adjustment !

#### Image quality

High image quality thanks to small focal spot down to 200  $\mu\text{m}$  !



Spatial resolution improvement with geometrical enlargement. Now, you can X-ray objects at distance.  **$\mu$ GemX** solves access problems.

No more geometrical distortion on curved objects ! Associated to a DDA,  **$\mu$ GemX** is a Perfect tool for pipe inspection.



#### Smart accessories design

360° handle for easy X-ray beam direction adjustment

**X-RIS** laser pointers and filters are easy to fix on your **GemX** thanks to magnets

# GemX SPECIFICATIONS



Model	kV min / max	mA min / max	Window	Focal spot * (mm) EN12543	Size (mm) without handle	Weight (kg) batteries included
<b>μGemX-150</b>	50 / 150	0.1 / 2.0	Al	<b>0.2</b>	287 x 282 x 193	16,3
<b>GemX-150</b>	20 / 150	0.1 / 2.0	Be	0.5 x 0.7	287 x 282 x 193	16,3
<b>GemX-160</b>	50 / 160	0.1 / 2.0	Al	0.5 x 0.7	287 x 282 x 193	16,3
<b>GemX-200</b>	50 / 200	0.1 / 2.0	Al	0.5 x 0.7	314 x 358 x 226,5	25

- ▶ Typical duty cycle at 20°C : 1/3
  - ▶ Universal power supply : 26 to 54 Vdc
  - ▶ Built-in LiPo batteries. Battery life time : 60 minutes X-ray at full power
  - ▶ Insulation : oil
  - ▶ Smart 360° handle for easy set-up
- ▶ Beam type : constant potential
  - ▶ Beam angle: 45° x 45°
  - ▶ Bluetooth (V 4.0) , up to 80m wireless control
  - ▶ Wired ethernet communication
  - ▶ CE and NFC 74100 compliant

## GemX ACCESSORIES

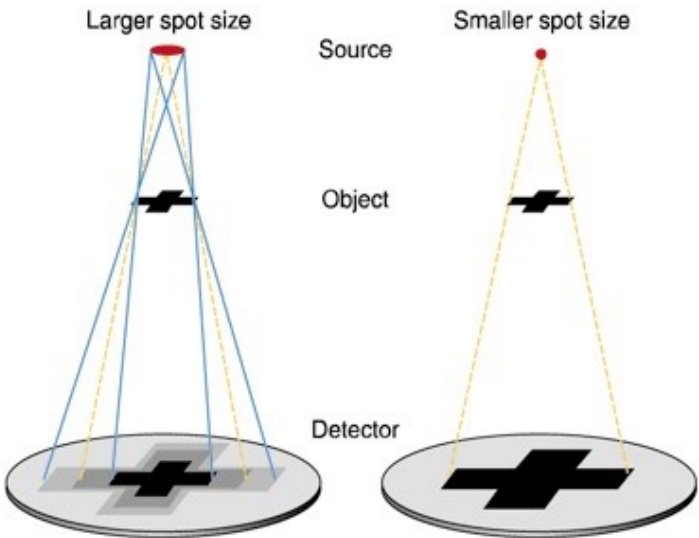
- ▶ Laser centering device
- ▶ Lead cap for tube for safe warmups and seasonings
- ▶ Magnetic filters holder
- ▶ Tripod
- ▶ Flashing lights and buzzers available
- ▶ Cable reel with 40m ethernet cable
- ▶ Carrying case
- ▶ **Maestro** Control software



## IMAGE QUALITY AND CLASS B IMPROVEMENT THANKS TO μGemX

DDA pixel size		200 μm	140 μm	96 μm
Thickness	Class B			
	... ; 1.5			
	1.5 ; 4			
	4 ; 8			
	8 ; 12			
	12 ; 40			
	40 ; 120			
	120 ; 200			
	200 ; ...			

- ▶ 200 μm Pixel Size - Thickness : 120 mm -> 8 mm
- ▶ 140 μm Pixel Size - Thickness : 40 mm -> 4 mm
- ▶ 96 μm Pixel Size - Thickness : 8 mm -> 1,5 mm



[www.xris.eu](http://www.xris.eu)