

THE BAR DOES **NOT** RAISE ITSELF

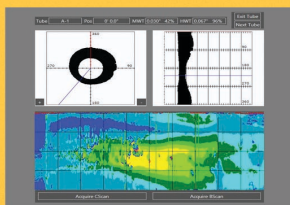
INTRODUCING THE **NEXT GENERATION** OF HEAT EXCHANGER INSPECTION



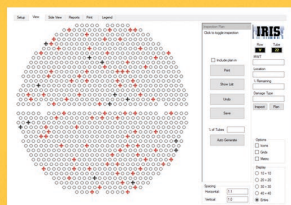
Representing the seventh generation of the IRIS system, the **IRIS 9000 Plus** has more than 30 years of field inspection experience incorporated in its design.

This experience combined with a strong commitment to quality and a history of innovation has made **IRIS INSPECTION SERVICES, INC.** the undisputed leader in IRIS technology.

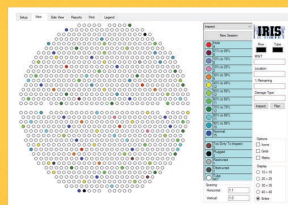
NEW IRIS-VISION 5.0[®]: THE COMPLETE IRIS CONTROL SYSTEM & REPORTING SOFTWARE



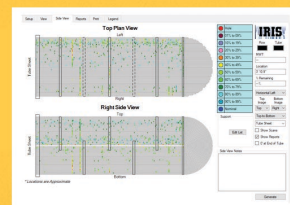
REAL TIME C-SCAN



REAL TIME INSPECTION PLANS



TUBE MAPPING DISPLAY



SIDE VIEW DISPLAY



This state-of-the-art portable instrument was designed to operate reliably and accurately in the harsh conditions that are found in petrochemical and industrial plants worldwide.

iris-inspection.com • +1-281-424-3200 • sales@iris-inspection.com • Houston, TX



**A GOOD INSPECTION
DOESN'T COST. IT PAYS**

I R I S 9 0 0 0 P L U S

SPECIFICATIONS

NEXT GENERATION PERFORMANCE WITH PULLING SPEEDS OF UP TO 5 TIMES AS FAST

HARDWARE

Channels	1 pulse echo
Pulse Voltage	200-300 V
Bandwidth	48 MHz
Transducer Frequency	15 MHz
Maximum Pulsing Rate	up to 13 kHz
A-Scan Length	scalable 255 points
Turbine Speed	up to 200 rps
Min Wall Thickness	.229mm (0.009")
Max Wall Thickness	35mm (1.380")
Probe Recognition	AUTO
Hardware Monitoring	continual calibration, improved fault & probe monitoring
Encoder	quadrature
Remote	drive motor direction & speed control
Syncing	improved syncing, auto adjust to turbine speed
Interface (Dual)	Hardware or software control
Chassis	rugged reinforced and braced aluminum
Dimensions	31 cm L x 26 cm W x 17cm H 7kg
Temperature Range	-18°C to 46°C (0°F to 115°F)
Input Voltage	100-240v • 50-60Hz

SOFTWARE

Realtime Views	B- and C-scan realtime MWT readings, image and control settings recorded, user defined alarm limits
Setup Display Profilometry Display	B-Scan wall thickness, minimum wall thickness, adjustable cursor and color coded
Cursors	cross-section cursors: auto or manual pit sizing
Measurement	wall remaining, wall loss and percentages
OS	Windows 10
Inspection Plans	manual or auto-generated
Reporting	on-site report generation including tube sheet maps, exchanger side view, B- and C-scan screen captures and more

